

3-15-2014

Founders Keepers Newsletter 2014-03-15

NIU Libraries

Follow this and additional works at: <https://huskiecommons.lib.niu.edu/ua-library>

Recommended Citation

NIU Libraries, "Founders Keepers Newsletter 2014-03-15" (2014). *University Libraries Archive*. 26.
<https://huskiecommons.lib.niu.edu/ua-library/26>

This Newsletter is brought to you for free and open access by the Teaching & Learning Archives at Huskie Commons. It has been accepted for inclusion in University Libraries Archive by an authorized administrator of Huskie Commons. For more information, please contact jschumacher@niu.edu.

Founders Keepers

Upcoming Events

- Publications deadline
March 28
- Lee Schreiner presentation
April 10
- Student Party
April 16
- Declaration signing
April 17

How to Ruin a Good Book, by Lisa Fisher

The Preservation Committee would like to encourage anyone who reads and /or borrows books from any library, to notice the two case display of our library books, "How to Ruin a Good Book."

We want to emphasize the importance of how to treat a book correctly so that others can use them again and again. Our hope is that all of our students, staff, and faculty will realize the many different ways books may become damaged, and help us to preserve and protect our books from

harm. We want people to treat books with the respect they deserve. Please remember that books are able to live hundreds of years, much longer than any human!

There are two exhibit cases that showcase just some of the many different ways books get damaged.

In one exhibit case the books displayed are our "Hopeless Cases", in other words, books from our collection that were once in circulation, but sadly, no more. These books are

beyond repair and may never be used again.

The other exhibit case features books from our current circulating collection that are damaged, either accidentally or intentionally. Some of these books can be repaired in our Preservation department, and others can be sent out to a Commercial Bindery, and still others will be withdrawn, never to be used again.



Publications & Honors Display

We will have a display of all 2013 employee publications and honors at the UL Spring Recognition again this

year. Please have copies of your materials to Rosanne Cordell by Friday, March 28.



Information You Can Use from Technical Services! by Wanda Enburg

Recent headings changes in Voyager

Berlin, Battle of, 1945 **changed to** Berlin, Battle of, Berlin, Germany, 1945

Britain, Battle of, 1940 **changed to** Britain, Battle of, Great Britain, 1940

Bivalvia, Fossil **changed to** Bivalves, Fossil

African Americans \$x Ethnic identity **changed to** African Americans \$x Race identity

Architecture \$z United States \$y 21st century **changed to** Architecture \$z United States \$x History \$y 21st century

Architecture \$z United States \$y 20th century **changed to** Architecture \$z United States \$x History \$y 20th century

Automatic checkout equipment **changed to** Automatic test equipment

Aceh (Indonesia) \$x Civilization **changed to** Nanggroe Aceh Darussalam (Indonesia) \$x Civilization

Architecture \$z Japan \$y 20th century **changed to** Architecture \$z Japan \$x History \$y 20th century

Architecture, Modern \$y 20th century \$z Japan **changed to** Architecture \$z Japan \$x History \$y 20th century

Österreich **changed to** Austria

Art, Modern \$y 20th century \$z Germany **changed to** Art, German \$y 20th century

Automobiles, Electric **changed to** Electric automobiles

Biology \$x Field work **changed to** Biology \$x Fieldwork

Brunei periodicals **changed to** Bruneian periodicals

Arbitration, International **changed to** Arbitration (International law)

Architecture and the physically handicapped **changed to** Barrier-free design

Bible \$v Poetry **changed to** Bible \$x History of Biblical events \$v Poetry

Aeroplanes, Military **changed to** Airplanes, Military

Binandere (Papua New Guinea people) **changed to** Binandere (Papua New Guinean people)

Baltimore, Battle of, 1814 **changed to** Baltimore, Battle of, Baltimore, Md., 1814

Bibliography \$x Books issued in series **changed to** Monographic series

Avatars (Computer graphics) **changed to** Avatars (Virtual reality)

Blind-deaf **changed to** Deafblind people

Abnaki Indians **changed to** Abenaki Indians

Bataan (Philippines : Province), Battle of, 1942 **changed to** Bataan, Battle of, Philippines, 1942

Barcarolles **changed to** Barcaroles

African American aged **changed to** Older African Americans

Bridges, Tubular **changed to** Tubular bridges

Borane **changed to** Boranes

Art, Singapore **changed to** Art, Singaporean

Art, Australian aboriginal **changed to** Art, Aboriginal Australian

American Revolution Bicentennial, 1776-1976 **changed to** American Revolution Bicentennial, 1976

Bone \$x Growth **changed to** Bones \$x Growth



Student Party, by Brian Prall

It is time once again for the out-of-this-world Annual Student Appreciation Party:

**Wednesday, April 16th
In the Staff Lounge
11:30 a.m. – 1:30 p.m.**

And once again **WE NEED YOUR HELP**. The fate of that galaxy, or at least the happiness of our beloved student workers, hangs in the balance. We need **donations** (money and/or spectacular raffle prizes), **volunteers** (for set up, sign in, activities, clean up, etc.), and **culinary masters** (to supplement the pizza). We need any artistic folks who would like to lend their time and talents to the official Bag Decorating "Party" on Tuesday, April 1st in the Staff Lounge from 10:00 a.m. - 11:30 a.m. We will be Sci-Fi'ing (not an actual verb) up the paper bags being used as goody bags for the students at the party. Thank you all for your continued support!

If you have time, talents, or tithes you would like to contribute please see one of the Party Planning Committee members:

Sherrri Barber (Copy Services)
Ron Barshinger (Access Services)
Stacey Bivens (Stacks)
Kate Hartman (IDS)

Brian Prall (IDS)
Ginger Prothero-Schwersenska (Acquisitions)
Charisma Turner (Acquisitions)

Faculty and staff, you're our only hope!

P.S. If you couldn't tell, the Theme this year is Science Fiction, so if you have any costumes or props you'd like to lend to decorating efforts or our "Selfie Photo Booth", it would be greatly appreciated **OR** just wear them yourselves. Dress up is strongly encouraged.

Personnel News from Technical Services, by Ete Olson

Mary Burns will be our new RBSC Catalog Librarian. She will start April 1. Her office will be located in Technical Services, Room 38 (Cason's old office). Please join us in welcoming her.

Charisma Dawson's last day is Friday, March 14. Charisma has been working in Technical Services since March 16, 2008. Thank you, Charisma. We wish you the best!

And some anniversaries!

In January, Mark Hamilton celebrated 25 years with NIU and Nancy Adams celebrated 30 years with NIU. Thank you for your dedication!

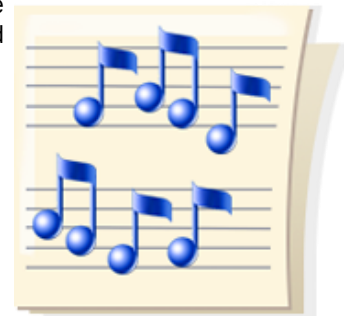


Jazz Display, by Danielle Spalenka

The Music Library and the Regional History Center have collaborated on an exhibit that celebrates the rich history of jazz and jazz instruction at NIU. The exhibit is on display in the Music Library for the Spring 2014 semester, and includes photographs from the Univer-

sity Archives. The archival photographs feature noted jazz personalities who have visited NIU over the past four decades. Included in the exhibit are jazz pianist Marian McPartland; northern Illinois native and jazz drummer Louie Bellson; and jazz legend Duke Ellington during

his final public performance in 1974. For more information check out the Music Library blog. <http://niumusiclibrary.blogspot.com/>



The Last Word: Public Services Patron Survey

Founders Memorial Library will be conducting a survey of walk-in patrons at all the service points in Public Services Sunday, March 16, through Saturday, March 22. We have received a waiver from IRB since this is not a research project and is only for the purpose of checking whether our patrons are generally satisfied with our service.

The survey form that will be used was reviewed by the Reference & Research Publicity and Marketing group and revised according to

their suggestions. A box will be placed at the security desk for patrons to return their surveys. All the employees will need to do is ask every patron that week at the end of their transaction, if they are willing to fill out a survey on our service. If they are, the patron is given a survey, and the employee points out where it can be returned and thanks them.

Checking the public's perception of the quality of our service is becoming a standard practice in libraries, but the interpretation of the results

is complex. Since some service points are used primarily to discuss problems, we will be looking for unexpected or unusual patterns of responses rather than certain percentages.

So, if you see surveys floating around FML next week, you'll know that we in Public Services are just having a service check-up!

